



Public Open Space Strategy 2024 - 2034



Contents

Introduction	3
Purpose	3
What is POS.....	4
Strategy Scope	5
Strategic Alignment.....	5
Framework Descriptions.....	5
Guiding Planning Principles	6
Hierarchy of Public Open Space within City of Fremantle	7
POS Provision	8
Sport and Oval Use	9
POS Gaps.....	9
Future Demand	10
Key Priorities	11
Function of the Public Open Spaces within City of Fremantle ...	12
List of Public Open Space	13

Acknowledgement of Country

Kaya nidja Walyalup, wadjak boodja wer nyidiyang boodja. (Hello, this Freo Wadjak country and white fella country). Ngalak kaadatj ngalang wadjak moort wirin keniny, kawininy, kakarookiny wer warangkiny. (We acknowledge our Wadjak families spirits celebrating, laughing, dancing and singing). The City of Fremantle acknowledges the Whadjuk people as the Traditional Owners of the Fremantle/Walyalup area and we recognise their cultural and heritage beliefs are still important today.

The City would like to acknowledge the contribution of Shane Spinks Consulting, to the development of the strategy.

Introduction

In today's rapidly changing world, public open spaces serve as vital sanctuaries, providing communities with places for recreation, relaxation, social interaction, and connection with nature. As population growth, climate change, and urbanisation pose significant challenges, the value of these spaces becomes increasingly evident.

The Fremantle community told us they most often spend their outdoor leisure time walking, visiting the beach, using the Fremantle Leisure Centre and reading; and the most common reasons for using POS were to relax and take time out, enjoy nature and walk pets. They also told us the most important features of the City's POS were accessibility, shade and native trees and vegetation. Residents highlighted lack of compliant infrastructure meeting both modern sporting standards and accessibility requirements and outdoor exercise areas as some of the areas they would like to see improvement in the City's POS.

The purpose of the City of Fremantle Public Open Space (POS) Strategy is to provide a clear strategic direction and framework for the provision and management of POS within the City. In doing so, the Strategy recognises the challenges presented by the City's declining POS provision per person and limited opportunities for new POS acquisition.

The City's future directions for public open space is to ensure it continues to serve its purpose to allow the community to participate and connect in a functional, flexible and sustainable environment.

- The level of POS provision per 1,000 people and due to population increase will continue to decline, with only five of the City's eight suburbs meeting the state government's existing standard of 3.36ha per 1,000 people.
- The current limited functionality of the City's existing POS (in particular Sport Spaces) and associated community infrastructure, reduces the capacity of the POS to cater for growth in participation and changing community needs
- Current management practices can present a barrier for use and create inequitable access to Sport Spaces and bookable POS areas.
- Adaption to climate change, requiring greater resilience of turf and landscaped areas, and greater flexibility of infrastructure to cater for changing patterns of use over time.

This strategy has responded to these by developing four key priorities for the City to abide by, in order to counteract these challenges.

Purpose

The City of Fremantle's POS Strategy is an informing strategy in the context of the City's Integrated Planning and Reporting Framework, and so it is important that the Strategy aligns with the City's vision, which is:

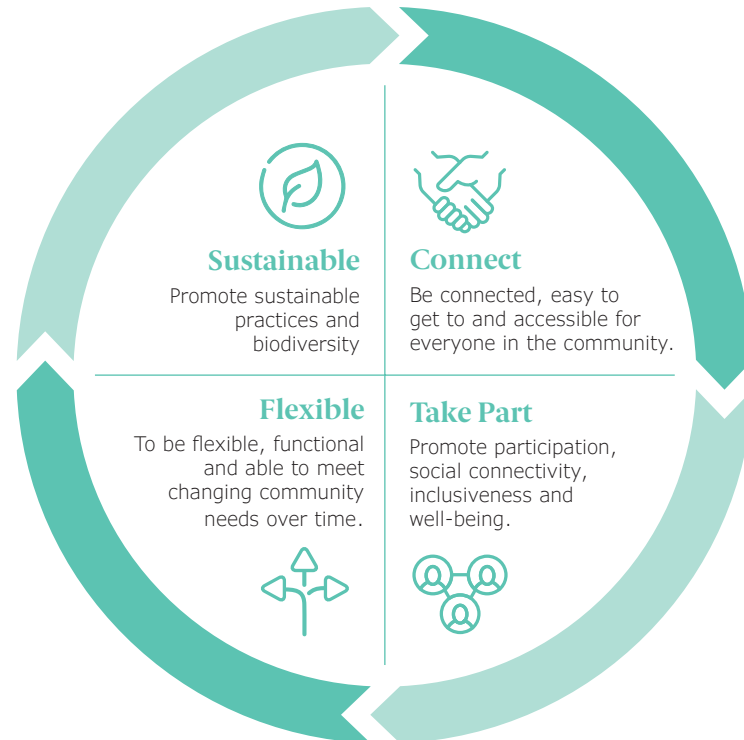
Vision for the future

Fremantle: a destination city

- A city that is clever and creative, inspiring and inclusive.
- A city that welcomes and celebrates all people and cultures.
- A city that encourages innovation, prosperity and achievement.
- A compassionate city that cares for the wellbeing of our people and the environment we share.
- A city that thrives on diversity and dares to be different.

The vision which underpins the Strategy is as follows:

For the City of Fremantle's Public Open Space to:



What is POS

In the context of this Strategy, Public Open Space and Community Infrastructure are defined as Follows:

Public Open Space

Open Space is land which is owned, vested or managed by the City of Fremantle and has been set aside for the purpose of public enjoyment and protection of unique, environmental, social and cultural values for existing and future generations.

Community Infrastructure

Community infrastructure is the facilities which are provided to enable the provision of services, activities or opportunity for use. In the context of POS, community infrastructure includes (but is not limited to) buildings (i.e., toilets, changerooms, storage areas, sporting pavilions etc.), floodlighting, playgrounds, goals, cricket wickets, practice nets, irrigation systems, car parking, pathways etc.



Strategy Scope

The primary focus of this Strategy is on parks and sporting fields and includes consideration of the community infrastructure associated with the City's POS (i.e., playgrounds, toilets, changerooms, floodlighting) and supporting infrastructure including car parking, irrigation systems etc.

The Strategy does not consider the City of Fremantle's beaches, conservation areas or stand-alone community and recreation centres. It is intended that these types of community infrastructure may be included in future revisions of the Strategy. A list of the POS included within the scope of the Strategy has been included at the end of the document.



Strategic Alignment

The Strategy has been developed within the context of the City of Fremantle's Integrated Planning and Reporting Framework and external stakeholder strategies, policies and plans. The relationship of these documents to the Strategy has been illustrated in the figure below, based on the Integrated Planning and Reporting Framework.



Figure 1: POS Strategy Integrated Planning and Reporting Framework Alignment

Framework Descriptions

The City of Fremantle POS Framework aligns with the Department of Local Government, Sport and Cultural Industries POS Classification Framework (2012). This framework defines POS by function and by hierarchy of use. The City of Fremantle's public open spaces are appealing for large scale events that attract visitors from outside of the City. Thus, the City needs to balance the use the POS Classification Framework (2012) will be considered and activated in response to demands of the City.

Function of POS

Type	Purpose
Recreation Spaces	Recreation spaces provide a setting for informal play and physical activity, relaxation and social interaction in a timely manner and meet community expectations
Sport Spaces	Sport spaces provide a setting for formal structured sporting activities.
Nature Spaces	Nature spaces provide a setting where people can enjoy nearby nature and protect local biodiversity and natural area values.

Hierarchy of POS

Type	Description	Catchment & Size
Small	Small open spaces can provide numerous community benefits, particularly within an inner urban context.	Immediate walking distance. < 0.4ha
Local	Small parklands that service the recreation needs of the immediate residential population.	400m or 5-minute walk 0.4ha to 1ha
Neighbourhood	Recreational and social focus of a community, providing a variety of features and facilities and opportunities to socialise.	800m or 10-minute walk. Total area of between 1ha to 5ha.
District	Designed to provide for organised formal sport and usually include recreation space and some nature space around the perimeter of the sporting spaces.	2km or 5-minute drive. Between 5ha to 15+ha
Regional	Spaces accommodate important recreation and organised sport spaces as well as significant nature spaces.	Serve one or more geographical or social regions. Attract visitors from outside City

Guiding Planning Principles

The following principles have been developed to guide the strategy development process and the implementation of the Strategy's actions.



Equity of Access, Availability and Participation

- Improve access to POS for pedestrians, cyclists and public transport.
- Improve physical access within its POS and associated community, recreation and sporting infrastructure (community infrastructure).
- Implement policy and management models which maximise availability of the City's Public Open Space and encourages participation across a broad range of formal and informal community, sport and recreational activity.



Opportunities

- Manage its POS and community infrastructure to optimise use, turf condition and general amenity, power generation and water efficiency.
- Increase and improve linkages between green spaces and areas of biodiversity.
- Support and promote club and user group sustainability and development.
- Promote opportunities to capitalise on emerging technologies to support the use and management of POS and community infrastructure.



Design

- Embed within its design process, guidelines and specifications that seek to maximise the functionality, flexibility and use of POS and community infrastructure to meet changing community needs over time.
- Create POS which encourage people to linger, connect and interact.
- Ensure best practice design is applied in an integrated way for existing and new POS .
- Finalise a POS and community infrastructure classification and definition framework (noting hierarchy and function), based on current industry practice.



Health and Wellbeing

- Facilitate and support programs, services and activities which encourage and promote the use of the City's POS and community infrastructure for improved health and well-being, social connectivity and inclusiveness within the community

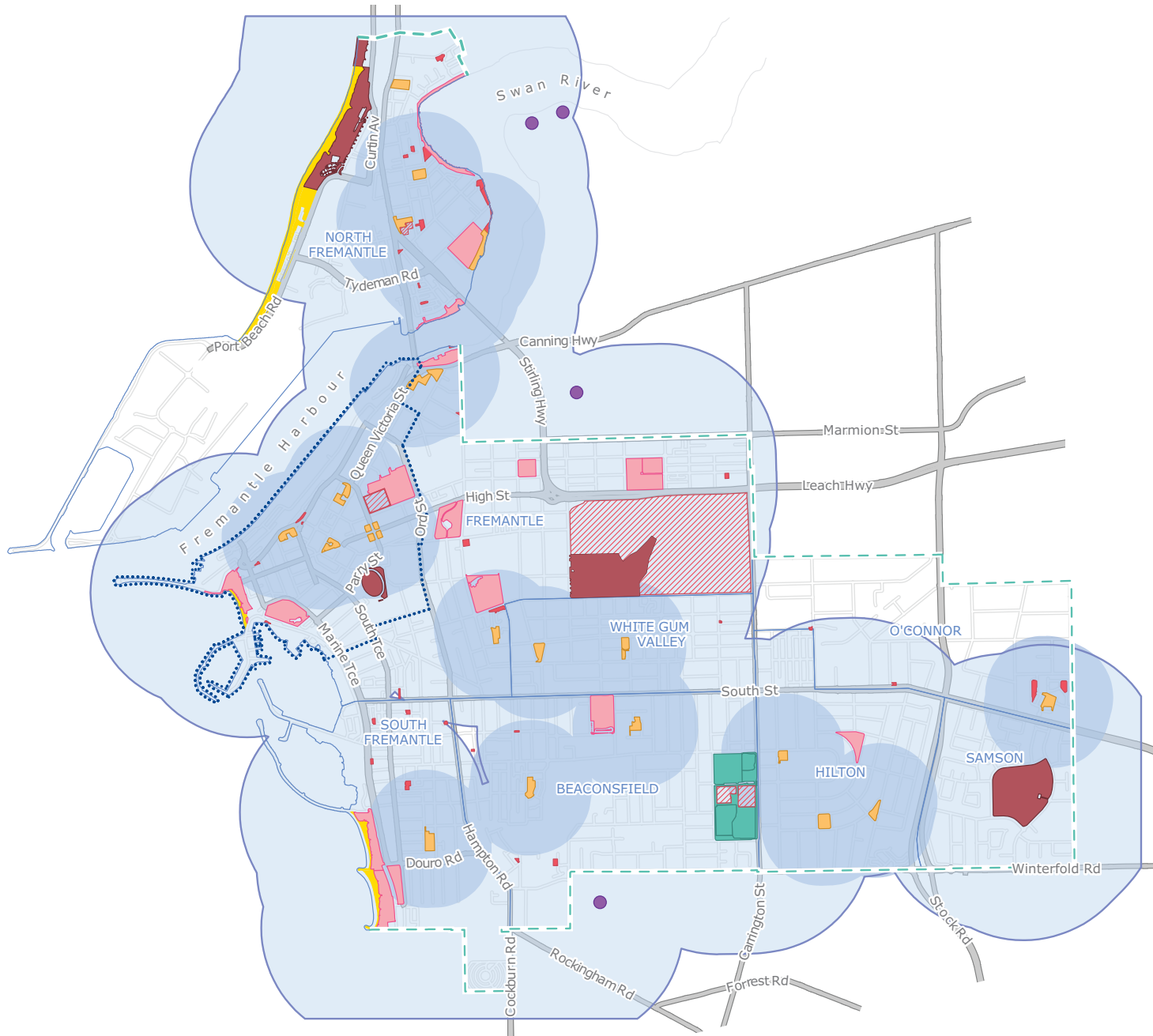


Community Focus

Undertake appropriate and meaningful engagement with the community and key stakeholder groups to:

- Optimise POS outcomes across the City.
- Ensure the needs of relevant stakeholder groups are considered in the design and development of new and re-developed of existing POS and community infrastructure.
- Balance the expectations of the community and stakeholder groups.
- Ensure POS and community infrastructure development is based on a sound evidence base.
- Ensure that projects are planned, budgeted and delivered in a timely manner and meet community expectations

Hierarchy of Public Open Space within City of Fremantle



POS Hierarchy

- Small POS <math>< 0.4\text{ha}</math>
- Local POS <math>< 0.4\text{ha}</math> but > 0.1ha
- Neighbourhood POS 1.0 to 5.0ha
- District 5ha to 15+ha
- Regional POS
- 400m Buffer around Local POS
- 800m Buffer around Neighbourhood, District or Regional POS
- Suburb boundary
- City of Fremantle / Walyalup Boundary
- POS in the CBD is subject to further planning strategies
- Major Sporting Facility near CoF Boundary
- Natural dune area
- Sporting space under lease

POS Provision

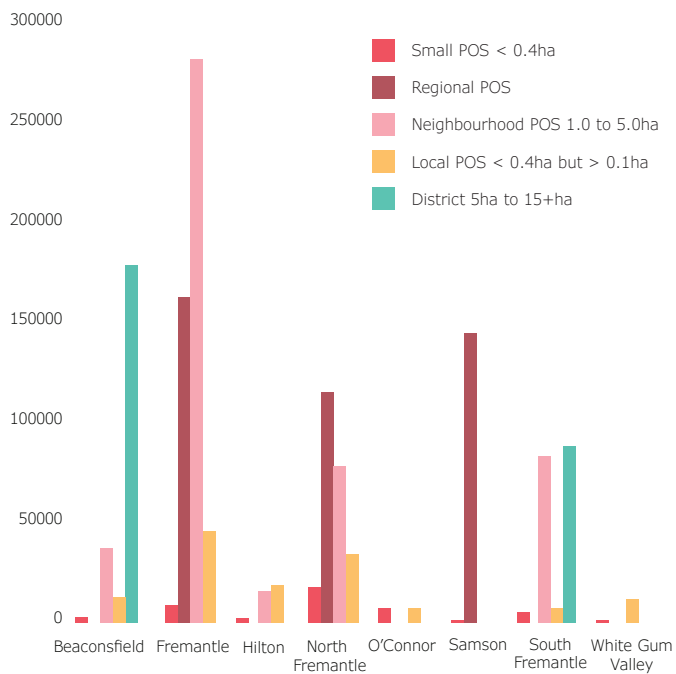
The City currently has a total of 1,270 hectares of POS. The table below breaks down this number based on the hierarchical classification of the POS and calculates the provision per person based population increments. As can be seen, with no further increase in POS, the provision per person will continue to decline across all classification categories.

		Population by Year and POS per Person			
		2016	2021	2031	2036
Class	Area sqm	28,893	31,930	35,101	42,440
Small	43,048	1.49	1.35	1.23	1.01
Local	137,776	4.77	4.31	3.86	3.25
Neighbourhood	492,441	17.04	15.42	12.46	11.60
District	176,697	6.12	5.53	9.99	4.16
Regional	419,989	14.54	13.15	11.97	9.90
	1,269,950	43.95	39.77	36.18	29.92

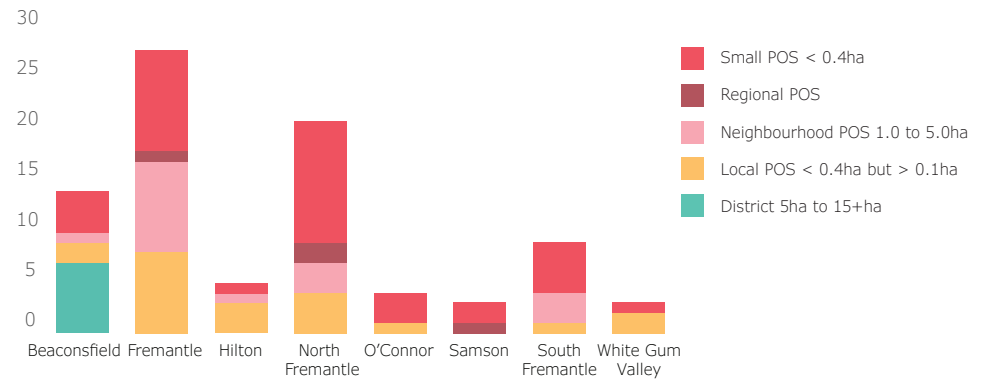
The current POS provision (hectares) by suburb and the number of POS areas by suburb are shown in the figures on this page. The dominant type by hierarchy are the 'Small' and 'Local' POS, while the most dominant type by number of POS areas is the 'Small' classification, which are areas smaller than 0.4ha or 4,000m2. POS areas of this size are quite restricted in their functionality, serving a limited recreational use for residents within the immediate area.

Assessment of POS provision on a suburb-by-suburb basis shows that Fremantle and Beaconsfield benefit most, with the largest provision in terms of total hectares and number of spaces.

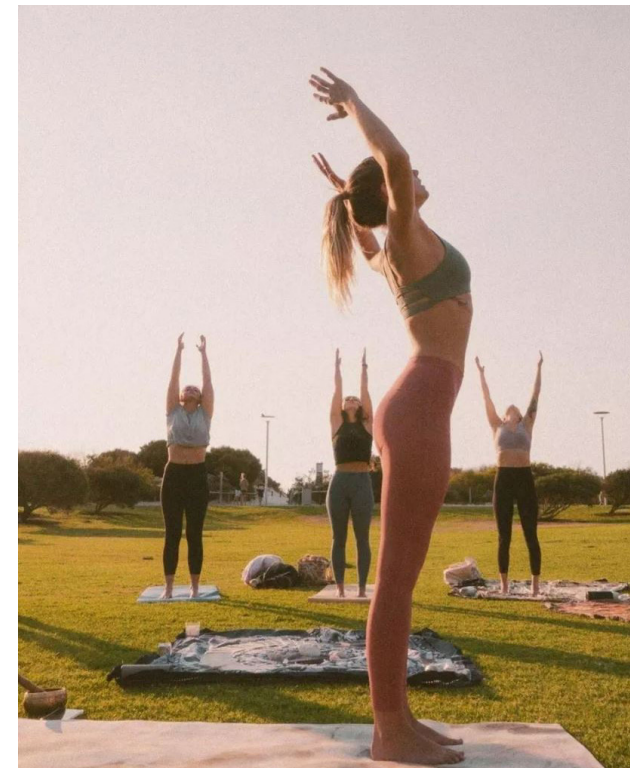
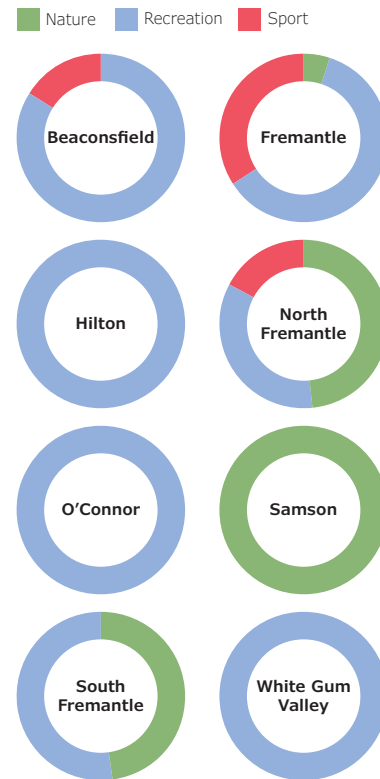
POS Provision by Suburb



Count of POS by Suburb



POS Function by Suburb

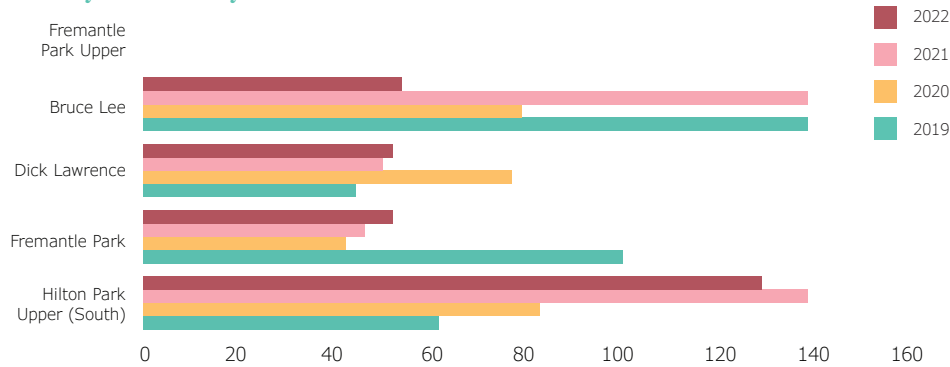


Sport and Oval Use

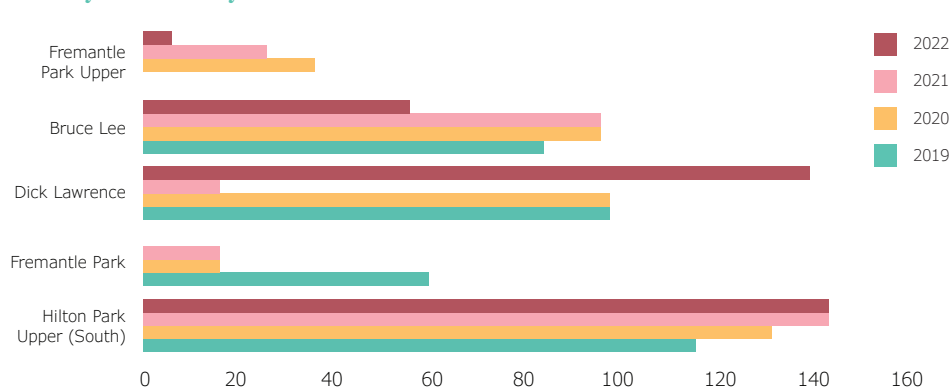
The draft CSRF Plan undertook a utilisation analysis of Sport Spaces over the period 2018 to 2020, based on the City's existing booking data. The playing capacity of a natural turf sports space pitch (playing field) is generally between 26 to 30 hours per week, based upon the quality of the turf and availability of appropriate levels of floodlighting.

The Figures below illustrate summer and winter season utilisation from 2018 to 2022 and show that utilisation of these spaces has increased over this period, with around half of Sport Spaces being used at or more than the 26 to 30 hours per week benchmark.

Summer Utilisation Based in Percentage Terms Based on an Average of 26 Hours Weekly Availability



Winter Utilisation Based in Percentage Terms Based on an Average of 26 Hours Weekly Availability



POS Gaps

The assessment of the City's existing POS provision identified the following key considerations:

- The provision of POS on a per person basis will continue to decline in the coming years.
- Current POS provision is predominantly through Small, Local and Neighbourhood POS areas.
- There is limited District and Regional POS, in particular for the provision of Sport Spaces.

POS provision is benchmarked against the State Government's Development Control Policy 2.3 (Public Open Space in Residential Areas), which identifies 10% POS or **3.36ha of POS per 1,000** population and is reflected within the state government's planning documentation. The application of this this standard to the current POS provision within the City of Fremantle shows that four of the City's eight suburbs currently meet or exceed the standard level of provision, as shown in the table below.

Suburb	Current POS Hectares	2021 Census Population	2021 Provision Ratio (ha / 1,000 pop.)
Beaconsfield	22.95	5,315	4.32
Fremantle	49.38	9,251	5.34
Hilton	3.43	4,323	0.79
North Fremantle	24.31	3,947	6.16
O'Connor	1.52	460	3.30
Samson	14.48	1,881	7.70
South Fremantle	9.65	3,398	2.84
White Gum Valley	1.27	3,358	0.38
City of Fremantle Total	127.00	31,933	3.98



Future Demand

Future POS provision within the City of Fremantle has been illustrated in the Figure below and shows that additional POS will be limited to primarily the suburb of Beaconsfield (one district space at 4ha in size), with smaller allocations to be provided in Fremantle, North Fremantle and South Fremantle.

Suburb	Current POS Hectares	2021 Census Population	2021 Provision Ratio (ha/1,000 pop.)	Future POS Hectares	2031 Census Population	2031 Provision Ratio (ha/1,000 pop.)
Beaconsfield	22.95	5,315	4.32	26.95	6269	4.30
Fremantle	49.38	9,251	5.34	50.38	10513	4.79
Hilton	3.43	4,323	0.79	3.43	3392	1.01
North Fremantle	24.31	3,947	6.16	24.51	5054	4.85
O'Connor	1.52	460	3.30	1.52	460	3.30
Samson	14.48	1,881	7.70	14.48	1863	7.77
South Fremantle	9.65	3,398	2.84	17.65	3470	5.09
White Gum Valley	1.27	3,358	0.38	1.27	3480	0.37
City of Fremantle Total	127.00	31,933	3.98	140.18	34501	3.68

When considering future demand, the draft CSR Plan identified that for the period from 2021 to 2031 there will be a need for the following additional Sport Spaces: The analysis of existing use of Sport Spaces shows that there is some capacity to meet future demand, however there is not the capacity to meet the future requirement for 7.92ha of space. This makes the provision of the additional Sports Space POS at Beaconsfield particularly important regarding the City's capacity to meet future sporting demand.

Table 1: Future POS Sport Spaces Requirements - Additional Hectares

Number	Size ¹	Total Hectares Required
1	Oval playing field dimension with safety zone = 145m x 175m.	2.53 ha
7	Square playing field dimension with safety zone = 108m x 71m. Total area = 7,668m ² or 0.77ha	5.39ha
Total		7.92ha

¹ based on designated senior sized Sport Space - DLGSC Sports Dimension Guide



Key Priorities

Focus Area: Acquisition



Vision: A focus on public open space acquisition, advocacy and partnerships.

Key Challenge: The level of POS provision per person will continue to decline, with only four of the City's eight suburbs meeting the state government's existing standard of 3.36ha per 1,000 people.

This Looks Like:

- Develop and implement an Advocacy Plan for the acquisition of additional POS within Beaconsfield (as a part of the Heart of Beaconsfield development), North Fremantle, Fremantle and South Fremantle.
- Implement standardised and formal Shared Use Agreements with education institutions for the use of POS.

Focus Area: Functionality



Vision: Flexibility of function with public open space to cater for growth in population and changing community needs

Key Challenge: The current limited functionality of the City's existing POS (in particular Sport Spaces) and associated community infrastructure, reduces the capacity of the POS to cater for growth in participation and changing community needs.

This Looks Like:

- Finalise the City's CSR Plan 2025-35.
- POS and Community Infrastructure guidelines, design specifications and standard drawings to facilitate the implementation of the Community Infrastructure Provision Policy

Focus Area: Management



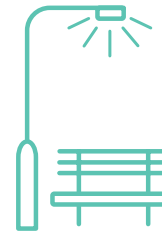
Vision: Sound management practices which increase availability for use of public open space.

Key Challenge: Current management practices can present a barrier for use and create inequitable access to Sport Spaces and bookable POS areas

This Looks Like:

- A revised policy framework which guides the lease, licence and hire of POS and associated community infrastructure.
- Develop a comprehensive policy and guidelines for the hire of POS and community infrastructure

Focus Area: Sustainability

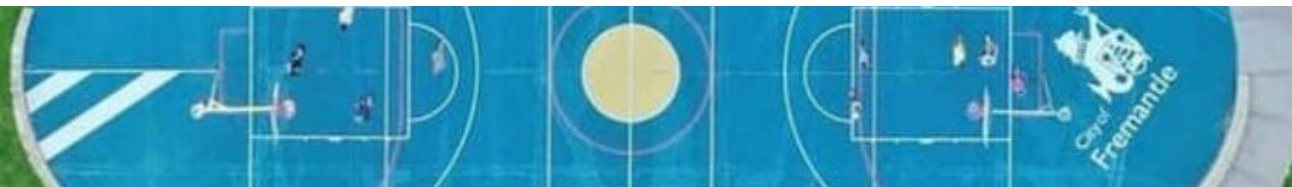


Vision: Long-term resilience of public open space surfaces by using sustainable lighting, landscaping & surface care practices.

Key Challenge: Adaption to climate change, requiring greater resilience of turf and landscaped areas, and greater flexibility of infrastructure to cater for changing patterns of use over time.

This Looks Like:

- Prepare and implement a city-wide water management plan.
- Continue implementation of the POS floodlighting and park lighting renewal program, with a specific focus on the use of LED lamps, sustainable power options and remote management capability.



Function of the Public Open Spaces within City of Fremantle



POS Function

- Nature
- Recreation
- Sport
- Suburb boundary
- City of Fremantle / Walyalup Boundary
- POS in the CBD is subject to further planning strategies
- Major Sporting Facility near CoF Boundary
- Natural dune area
- Sporting space under lease

List of Public Open Space

Beaconsfield

Name	Hierarchy	Function
Beacy Park	Small	Recreation
Bruce Lee	Neighbourhood	Sport
Reserve Davis	Local	Recreation
Park Hilton	District	Recreation
Reserve Ken Allen	District	Recreation
Field Naylor	Small	Recreation
Reserve Peace	District	Recreation
Grove Salentina	Local	Recreation
Ridge	Local	Recreation
Sardelic Reserve	Small	Recreation

Fremantle

Name	Hierarchy	Function
Arthur Head Res	Neighbourhood	Nature
Beach Reserve	Neighbourhood	Recreation
Booyeembara Park	Regional	Recreation
Cantonment Hill	Local	Recreation
Douglas Park	Small	Recreation
East Street Jetty	Small	Recreation
Edmund Reserve	Small	Recreation
Elder Park	Small	Recreation
Esplanade Reserve	Neighbourhood	Recreation
Frank Gibson 1	Neighbourhood	Sport
Fremantle Oval	Neighbourhood	Sport
Fremantle Park	Neighbourhood	Sport
Holland Park	Small	Recreation
Horrie Long Res	Neighbourhood	Sport
Knutsford Reserve	Small	Recreation
Mews Park	Small	Recreation
Monument Hill	Neighbourhood	Recreation
Phillimore Gardens	Small	Recreation
Pioneer Park	Local	Recreation
Princess May Park	Local	Recreation
Queens Square	Local	Recreation
Railway Reserve	Small	Recreation
Stevens Reserve	Neighbourhood	Sport
Tuckfield Oval	Local	Recreation
Virginia Ryan Park	Local	Recreation

Hilton

Name	Hierarchy	Function
Collick Reserve	Local	Recreation
Griffiths Park	Neighbourhood	Recreation
Grigg Park	Local	Recreation
Hines Park	Small	Recreation
Moorni Boorne	Local	Recreation

North Fremantle

Name	Hierarchy	Function
Alfred Road Park	Local	Recreation
Burford Place Park	Small	Recreation
Dublin PAW	Small	Recreation
Gilbert Fraser Res	Neighbourhood	Sport
Gordon Dedman	Local	Recreation
Hicks Park	Small	Recreation
McCabe Memorial	Small	Recreation
North Freo F/Sh	Small	Recreation
Pensioner Guard	Small	Recreation
Point Direction	Small	Nature
Leighton Bch F/Sh	Regional	Nature
Prawn Bay	Neighbourhood	Recreation
Cypress Hill	Neighbourhood	Recreation
Rule Park	Small	Recreation
S.E.W. Park	Neighbourhood	Recreation
Sorrell Park	Neighbourhood	Recreation
Tyrone Reserve	Small	Recreation
War Memorial Park	Small	Recreation

O'Connor

Name	Hierarchy	Function
Collick Reserve	Local	Recreation
Griffiths Park	Neighbourhood	Recreation
Grigg Park	Local	Recreation
Hines Park	Small	Recreation
Moorni Boorne	Local	Recreation

Samson

Name	Hierarchy	Function
Haynes Court Res	Small	Recreation
Samson Park	Regional	Nature
Owen Fitzgerald	Small	Recreation

South Fremantle

Name	Hierarchy	Function
Coral Park	Small	Recreation
Florence Park	Small	Recreation
Gold Street Park	Small	Recreation
Lillydale Park	Small	Recreation
Mills And Wares	Small	Recreation
Parmelia Park	Local	Recreation
Wilson Park	Neighbourhood	Recreation

White Gum Valley

Name	Hierarchy	Function
Davies Reserve	Local	Recreation
Minilya Park	Small	Recreation
Valley Park	Local	Recreation